

Beautiful KITCHENS & BATHS

20 Trends That Are Here To Stay



SUMMER 2014
Display until July 21

\$7.99 U.S.



BHG SIP Reti Checkout

BHG.com/KitchenBath

How to Choose
And Use Marble p.116

**Fearless Color:
Go Bold Without Regrets** p.9



Jewel Tones

Glamorous details, metallic accents, and concealed appliances make this kitchen feel anything but utilitarian.

WRITER AND FIELD EDITOR LISA MOWRY | PHOTOS ANTHONY MASTERTSON



"Because the home is fairly formal in design, we wanted the kitchen to have that same elegant refinement," kitchen designer Matthew Quinn says. Glazed taupe cabinetry, accented with glass-front or mirrored doors, hides appliances and everyday storage.



Lynne Halpern owns a jewelry store, so she knows all about the allure of a little sparkle. She's also attuned to the art of mixing metals and other materials at her Atlanta boutique, Tassels, because the days of everything matching—whether in fashion or in the kitchen—are long gone. “I wanted the kitchen to be pretty, since it’s right off the sitting area where we spend the most time,” Lynne says. Consequently, marble and wood coexist with antiqued mirrors and bronze tiles in this high-rise cooking area, which boasts as many decorative details as any formal living room.

Lynne and her husband, Jack, specified that the kitchen not look too “kitcheny,” in fact. “We wanted things hidden, like appliances and TVs,” Lynne says. Kitchen designer Matthew Quinn came up with a layout that didn’t put any appliance front and center and that tucked the only exposed one—the cooktop—behind an island and eating area.

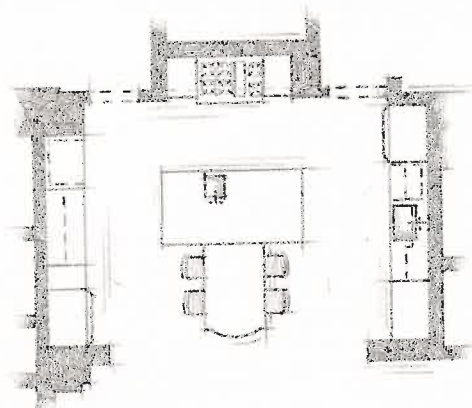
“I love paneling appliances and wanted to test my abilities with this kitchen,” Quinn says. “Every single appliance with the exception of the cooktop is either paneled or hidden behind retractable doors.” Guests often comment that they can’t find the wall ovens, since they’re cleverly concealed by doors. Likewise, a deep appliance garage holds coffee items and a television, and panels conceal the refrigerator and pantry.

To select finishes for a kitchen, Quinn likes to start from the floor and work up. In this case, the Halperns’ interior designer, Bill Stewart, had already specified a neutral limestone floor for the whole home. That let Quinn choose from a wide range of tones. For the countertops, he opted for

Opposite: The marble-top island includes a single-bowl sink, paneled dishwasher, and trash receptacle. Just beyond the island, a wall of cabinetry hides the pantry and wall ovens behind retractable mirrored doors. **Top right:** A chic custom chandelier provides an ambient layer of light. **Above right:** Veining in the countertop marble includes deep purple hues. **Right:** The circular motif in the cabinetry design adds another elegant touch.







Calacatta Viola marble, which has rich veining in merlot, teal, and taupe. “We pulled the taupe color from the marble and used that as our palette for the painted and glazed cabinetry,” Quinn says. “The cabinet door style is a crisp and clean recessed-panel door.” Attaching a table to the island allowed the design team to bring in the warmth of walnut. Metallic chairs and a mirrored inset on the table pedestal contribute to the room’s glitzy feel.

Shiny accents are carried throughout the space. A stainless-steel hood and bronze backsplash tiles hold court over the cooktop; mirrored cabinet fronts reflect light around the perimeter; and above, a custom chandelier dotted with rock crystals draws an audience. “The No. 1 thing people love in this kitchen is that light fixture over the table,” Lynne says. She appreciates how the kitchen changes its look throughout the day with the interplay of light. “It sparkles at night and is just so magical.”

RESOURCES BEGIN ON PAGE 122.

DESIGNER INSIGHTS

Metal Magic

One of the biggest trends at last year’s Coverings trade show was metal tiles for kitchens and baths. Designer Matthew Quinn shares strategies for incorporating a little shimmer into a space:

- **Think creatively.** Metal finishes include bronze, gold leaf, stainless steel, and dark tones, such as gunmetal, on a variety of materials, such as porcelain, natural stone, glass, and ceramic. Mix and match to create a one-of-a-kind design.
- **Don’t overdo it.** With metallic accents, a little goes a long way. In this kitchen, a custom stainless-steel hood, shimmery backsplash tile, and shiny metal chairs add just the right touch.
- **Strike a balance.** Quinn recommends mixing in honed surfaces to offset the shine and create a balanced look.



Opposite: Backsplash tiles in a bronze raku finish provide a warm sheen to the room and contrast nicely with the cooler tones of stainless steel and chrome. **Top:** Sleek black sconces flank the range. Their matte finish tempers the metallic surfaces found at the cooktop. **Above:** Glass-front cabinets above the bar sink brighten the space and allow homeowners Lynne and Jack Halpern to display pretty glassware.